



**Value doors<sup>®</sup>**  
& windows

# Fire Doors

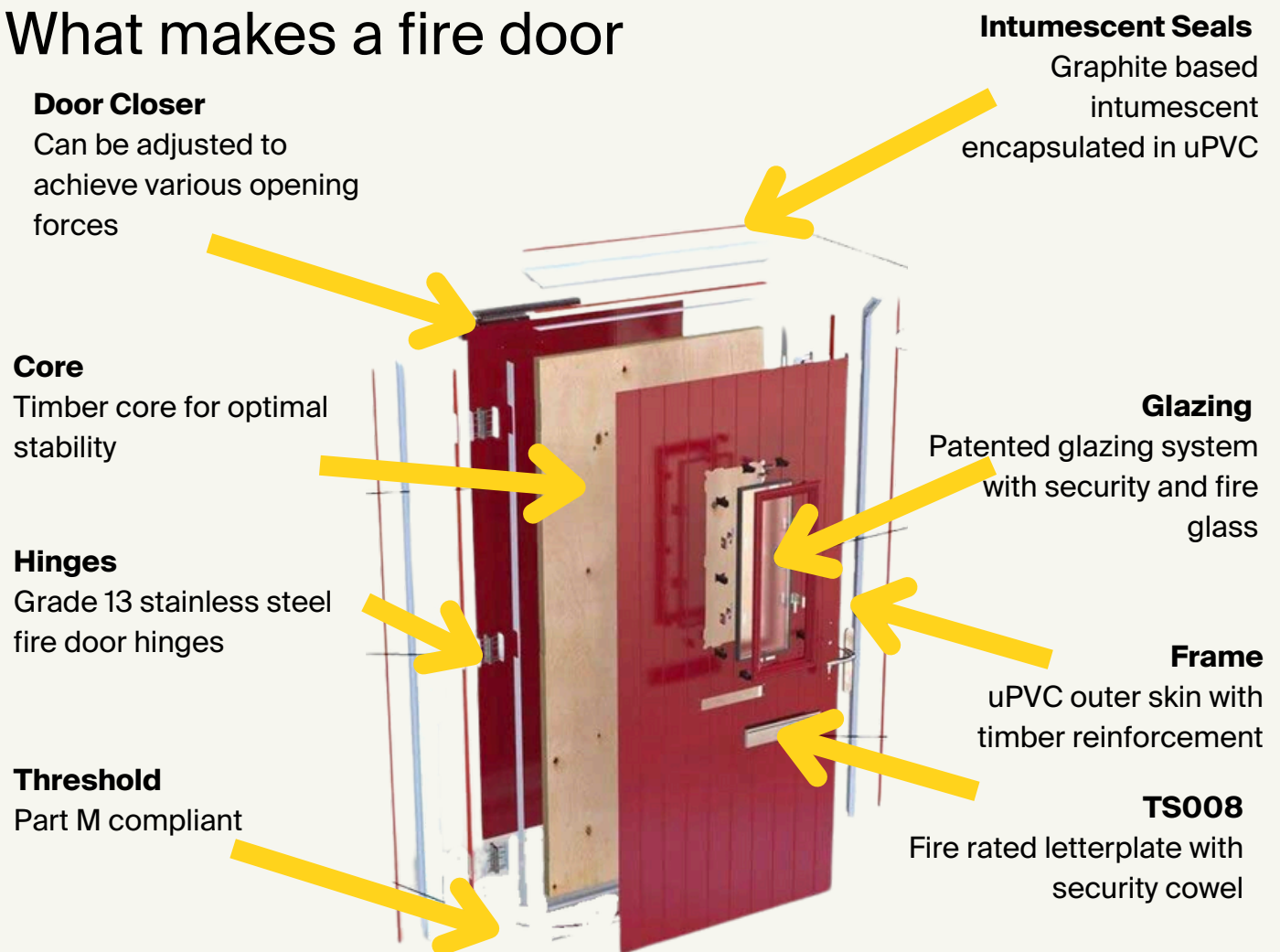


# Fire Doors

## What is a fire door?

Fire doors are critical in a building's passive fire protection strategy. They are utilised for fire compartmentation, which involves strategically placing physical barriers in a building to slow the spread of flames and smoke during a fire. In this post, we will explore the composition of fire doors, their level of protection, and the legal mandates for their use.

## What makes a fire door



# Accreditations



Certification Options					
	FD30	Tested for cold smoke leakage	Certifire	Certisecure	SBD accredited
Single Certification	✓	✓	✓ CF 5906	-	-
Dual Certification	✓	✓	✓ CF 5863	✓ CS 5112	✓

Certificates can be downloaded from [warringtonfire.com](http://warringtonfire.com)

# Fire Doors

Following successful confirmatory testing in line with Government recommendations, we are offering a limited fire door product range that we are able to demonstrate have specifically passed physical fire tests from BOTH directions.

## Available styles:



Door D



Door I



Door C



Door F



Door V



Door U



Door H



Door H



Door R  
(Grooved)



Door R  
(Non Grooved)

Available Door Colours	Red	Black	Chartwell Green	Duck Egg Blue	Cream	Green
	Black Brown	White	Grey	Blue	Poppy Red (High Gloss)	
Available Frame Colours	Red	Black	Chartwell Green	Duck Egg Blue	Cream	Green
	Black Brown	White	Grey	Blue	Poppy Red (High Gloss)	

# Fire Doors-Furniture



Gold

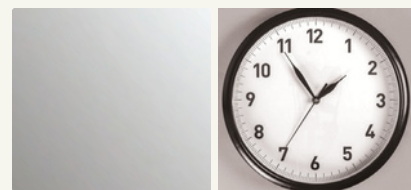
Chrome

## Lock and Cylinder

## Glass Options



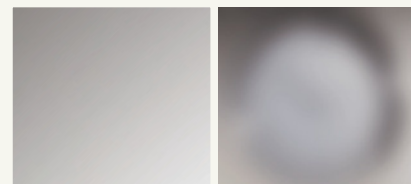
UAP Kinetica 3H  
BSi Kitemarked Euro Cylinder



Clear



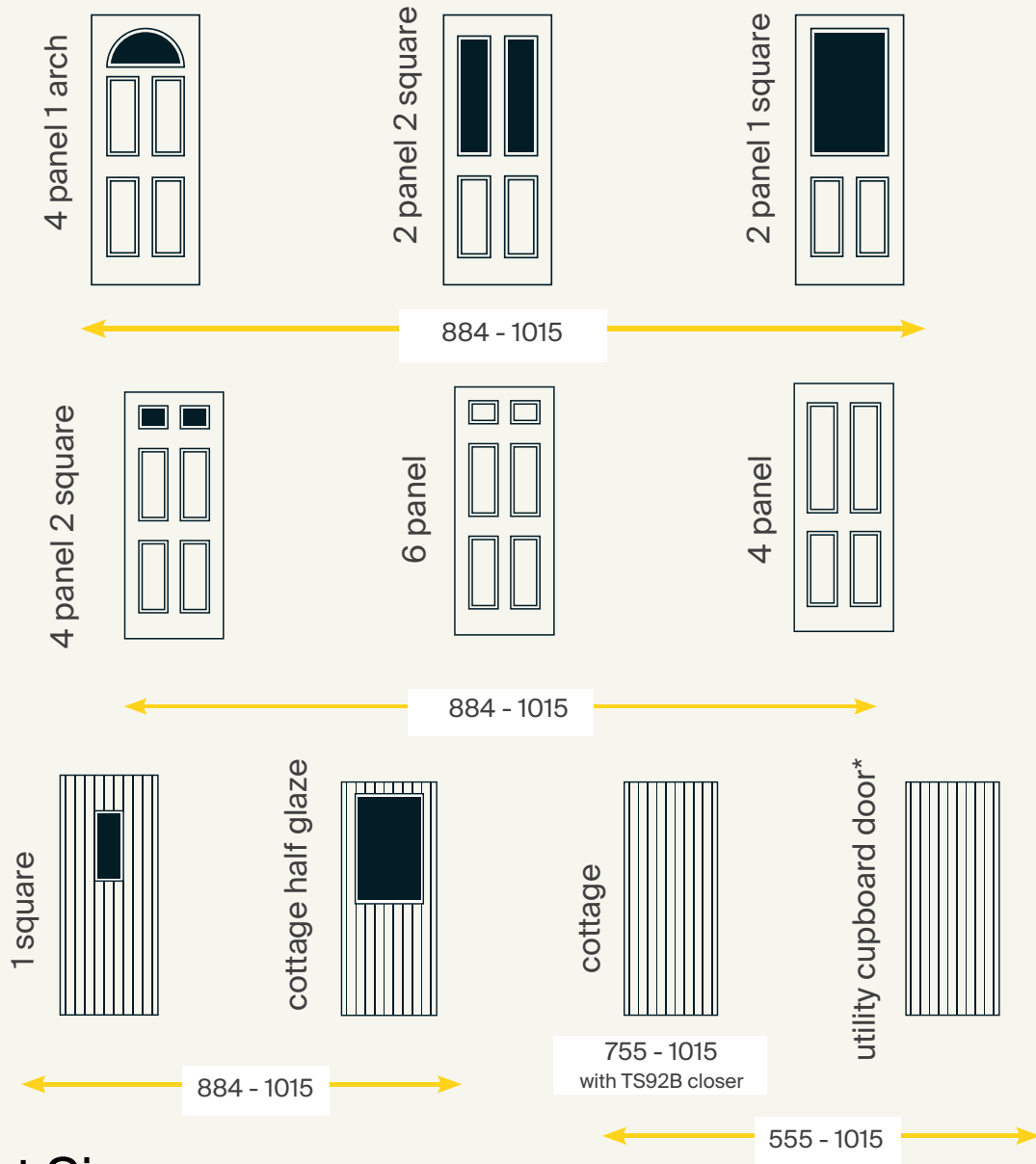
GU Multipoint Lock



Stippolyte

# Door Sizes

## Door Width Sizes



## Door Set Sizes

	Min Height	Max Height
Doorset Only	1971	2079
Including Toplight (Min 212 - Max 421)	2181	2500

\*Utility Cupboard Door is supplied without door closer and with "Fire Door Keep Locked" signage. All measurements in millimetres



# Specification Overview

## Single Certification

FD30S Fire doorset tested to BS 476: Part 22 or BS EN 1634-1:2014  
Certificated to BS 476: Part 22 by Warringtonfire Certifire scheme. Certificate number CF 5906.  
Tested for cold smoke leakage to BS EN 1634-3  
Capable of meeting Approved Document Q (Part Q), Security - Dwellings.

## Dual Certification

FD30S Fire and Security doorset tested to BS 476: Part 22 or BS EN 1634-1:2014  
Certificated to BS 476: Part 22 and PAS 24:2016 by Warringtonfire Certifire and Certisecure schemes. Certificate numbers CS 5112 / CF 5863  
Tested for cold smoke leakage to BS EN 1634-3  
Accredited by Secured by Design

## Integrity/Insulation

DSI fire doorsets are certificated for 30 minutes fire integrity and only suitable for use when fire insulation is required if the doorset has less than 20% of un-insulating glass, including any toplight.

## Frame

Timber hybrid frame. Low maintenance UPVC outer skin with sustainable sourced timber core reinforcement providing structural stability for all key compartments.

## Toplight Construction

Four sided frame with dedicated hardwood coupler

## Threshold Option

Low threshold in aluminum for accessibility

## Locking Mechanism

GU Multipoint slam lock with intumescent protection

## Cylinder

UAP Kinetica Euro Cylinder  
BSi 3\* Kitemarked

## Glazed Apertures

Insulated glass unit, argon filled with 7 mm Pilkington Pyrodur and 6.8 mm thick Pilkington K Clear laminated glass or Pilkington K P1A Stippolyte glass.

## Glazing Cassette

Colour matched cassette

## Hardware/Furniture

Certifire approved TS008 letterplate with security cowl.  
Eyeviewer available at low and high height for wheelchair accessibility.  
Trojan Surface mounted knocker.  
Fully suited in gold/chrome.  
Trojan surface mounted urn knocker.  
Fully suited in gold or chrome

## Handle Type

Lever/Lever Solid Spindle

## Hinge Type

3 x Grade 13, CE marked stainless steel butt hinges in chrome with intumescent protection.

## Closer

Certifire approved surface closers, Dorma TS72V arm closer and Dorma TS92 slide arm closer.  
Pilot holes prepared for installation on site.

### SINGLE CERTIFICATED



### DUAL CERTIFICATED



Value Doors & Windows reserves the right to alter specifications and descriptions without prior notice as part of our policy of continual development. This may affect pricing within your quote.



WWW.VALUEDOORS.CO.UK | PHONE 020 4587 8300

