

uPVC Windows Value Doors & Windows Brochure



Why Value Doors & Windows?



When investing in improving or expanding your home, you want to ensure your investment is in good hands.

Here at Value Doors & Windows, we focus on meeting your needs and wants. We do this by letting you customise your window.

We can deliver and supply throughout the UK*. This is due to having approved and highly experienced installers throughout the UK. Because you are in control of the whole process, if you have a supply-and-fit door, one of our installers will double-check the door's measurements just to make sure it's a perfect fit.

No job is too big or too small. Our team are here to help you through the whole process, so if you ever get stuck or need a helping hand we always have someone ready to take your call.

Customer Satisfaction

Read our customer review on Trustpilot.



Finance options

Various payment options available to suit your needs.



Hassle Free

We will only contact you once the door is made and you are ready to pay.



Sustainability

Every order we have we plant a tree in areas at risk of deforestation.

uPVC Windows Range



Style 1



Style 2



Style 3



Style 4



Style 5



Style 6



Style 7



Style 8



Style 9



Style 10



Style 11



Style 12



Style 13



Style 14



Style 15



Style 16



Style 17



Style 18



Style 19



Style 20



Style 21



Style 23

Available Door Colours

Black brown

Pebble Grey

Slate Grey

Chartwell Green

Red

Rosewood

White

Grey Grained

Silver Grey

White Cream

Green

Irish Oak

Solid Oak

Blue

Cream

Grey

Agate Grey

Available Frame Colours

White Foil

Chartwell Green

Irish Oak

Rosewood

Agate grey

White

Anthracite Grey

Black Brown

Oak

Cream

Silver Grey



Safe and secure

Liniar windows are fitted with high security multi-point locking as standard and are independently tested to the requirements of PAS 24 and Secured by Design.



Energy Efficient

With unique multi-chambered uPVC profile, Liniar windows can achieve the very latest A++ energy rating, helping retain heat within your property.



Fully tested

Liniar products are put through exhaustive testing processes to ensure they are robust, durable and built to last.



Eco-friendly

Each uPVC product in the Liniar range is made from lead-free, energy efficient, recyclable uPVC, making it a sustainable choice.



Made in Britain

The Liniar range is designed, tooled, extruded and tested at an award-winning, purpose-built, state-of-the-art factory in Derbyshire.



Low maintenance

Liniar products won't rot, rust, or require painting - just an occasional clean with warm soapy water, even with our foiled colours.

How Liniar uPVC profiles work

uPVC is a natural insulator, so it's one of the most energy-efficient materials for a window frame. Inside a Liniar frame, multiple chambers act as barriers, making it difficult for the heat inside your home to be transferred through and escape outside.

The drawings opposite show the inside of a Liniar standard, an EnergyPlus frame and an EnergyPlus90 frame, the colours representing heat and cold – with red symbolising the heat from your home and blue the cold air coming from the outside.

Patented designs

Liniar has patented a number of additional features that make its frames more energy efficient.

Spacer bars

Warm edge spacer bars can be selected, separating each glazed panel for higher energy efficiency.

Thermal dam

The patented thermal dam creates a multi-chamber thermal barrier at the frame's outer edge.

Glazing

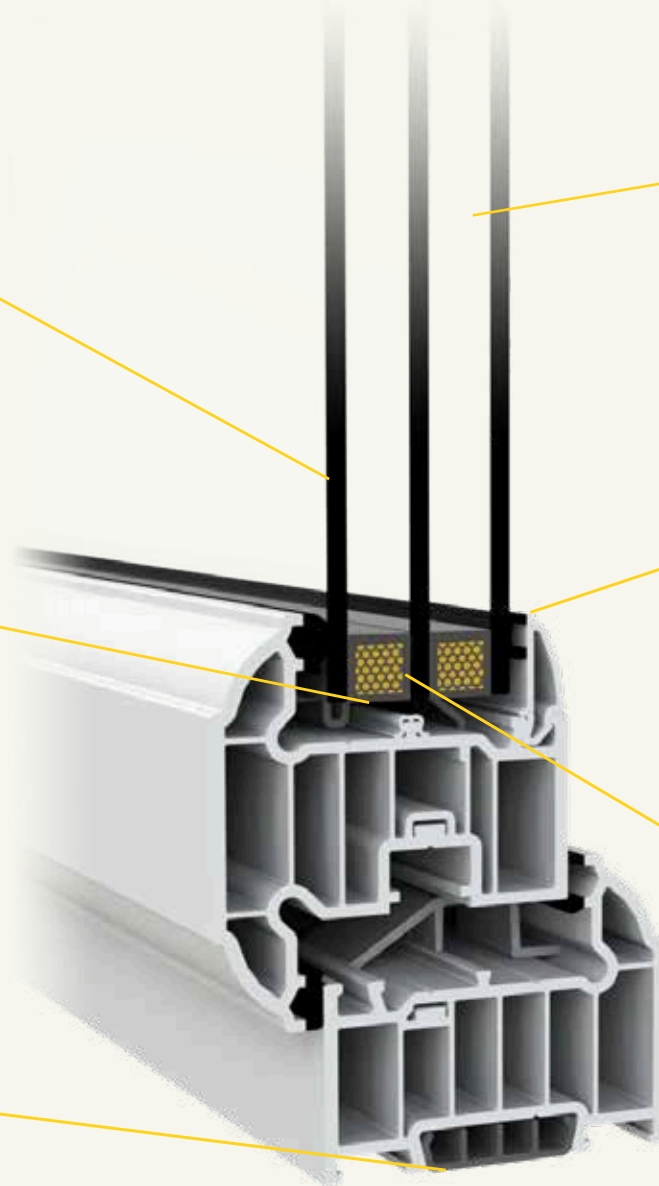
Liniar profiles are able to accept either double or triple glazing, depending on your requirements.

Bubble gasket

Liniar's patented 'bubble' gasket is co-extruded alongside the frame itself – so no heat loss or leaks.

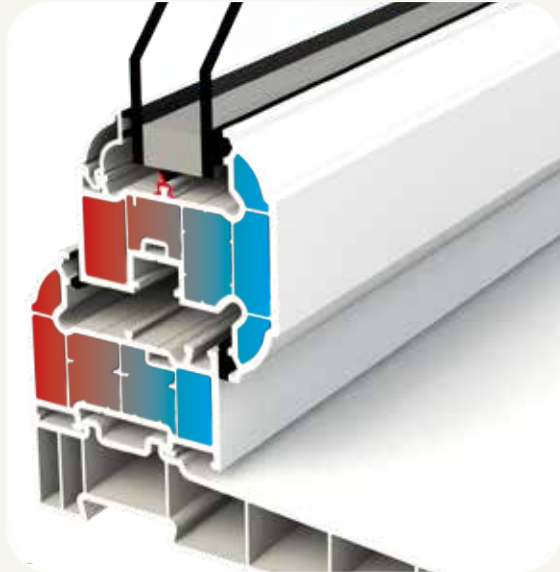
Glazing flipper

Liniar's unique glazing flipper creates a thermal barrier to seal the perimeter keeping the cold out.



The result is a supremely energy-efficient glazed product, capable of achieving the highest possible Windows Energy Rating of A++ or a U-value as low as 0.5 W/m²K with quad glazing*

Profile Comparison

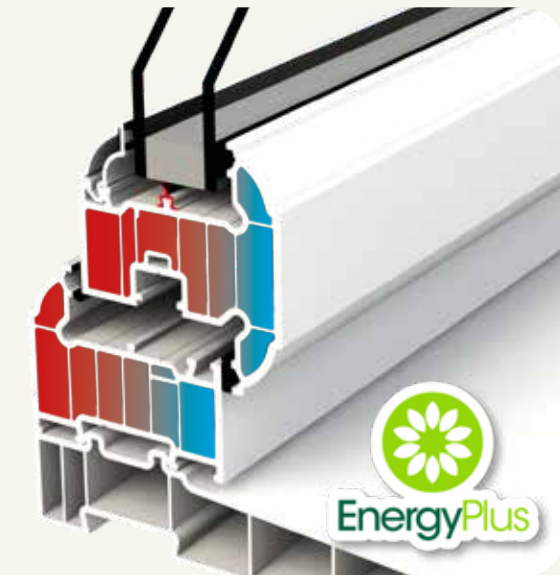


Standard

Why pay to heat your home and lose up to 20% of the heat through your windows and doors?

Linear uPVC window and door profiles are available in three formats – all designed to be extremely energy efficient.

- Standard – 70mm front to back, 4 symmetrical chambers, achieving U-values as low as 1.2 W/m²K
- EnergyPlus – 70mm front to back, 6 symmetrical chambers, achieving U-values as low as 0.8 W/m²K
- EnergyPlus90 – 90mm front to back, 9 symmetrical chambers, achieving U-values as low as 0.6 W/m²K

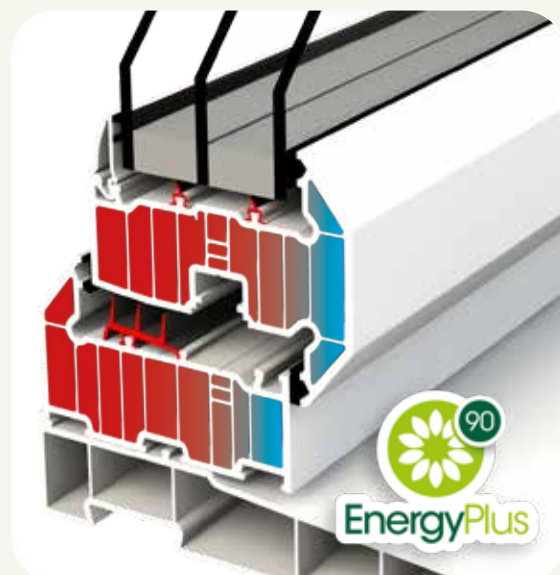


EnergyPlus

Both standard and EnergyPlus profiles are completely interchangeable and look exactly the same from the exterior – the only difference you'll see as your windows are fitted is the protective tape, which will feature the EnergyPlus logo if you've ordered 6-chamber windows.

Linear standard profile offers a cost effective option with energy efficiency that still beats most similar types of uPVC window.

Linear EnergyPlus profiles can achieve an A++ rating without the need for expensive low-iron glass on the outer pane of glass or the need for costly thermal inserts, making it a cost effective choice overall.



EnergyPlus90

Launched in 2018, EnergyPlus90 is a 90mm window system that looks and acts as a 70mm system - but which is the first uPVC window in the UK to achieve the exacting Passive House standard, for the highest possible thermal efficiency.

Both standard and EnergyPlus profiles are available in either chamfered (bevelled) or sculptured (curved) styles, depending on the product, whilst EnergyPlus90 comes in chamfered only. Please see individual product pages for more details.

Security and accreditations

The Liniar system has been designed to maximise energy efficiency without compromising security. This is backed up by the ongoing security testing of Liniar products, together with third party accreditation where applicable.

ModLok™

Developed by Liniar in conjunction with the world's leading lock manufacturers, the revolutionary patented ModLok™ (patent pending: 1306594.1) technology is built into Liniar's bi-folding and patio door systems. ModLok™ is a highly innovative combined reinforcing and locking mechanism, bringing additional strength and rigidity to the doors and enabling wider configurations of sliding and folding doors.

With hook bolts, shootbolts, anti-lift technology, anti-bump cylinders and optional anti-snap cylinders, ModLok™ products are extremely secure. Even hinge fixings are hidden inside the doors so they can't be unscrewed from the outside. Combining frame reinforcing within bi-fold and patio doors with a high security locking mechanism, Liniar's ModLok™ offers the structural benefits of an aluminium door.

Alumina by Liniar

The Alumina bi-fold system is manufactured from aluminium and offers similar high security features to ModLok™. The addition of an innovative high density polymer (patent pending: 1522501.4.1) lock ensures no heat is lost through this vital component. Unlike other aluminium doors, the lock itself creates a thermal break to help the Alumina bi-fold achieve low U-values.





Secured by Design

Liniar Secured by Design products are designed with exceptional security features and confirmed as meeting the requirements of the Association of Chief Police Officers.



PAS 24:2012

The British Standard for enhanced security performance, PAS 24 testing also includes testing for air and water tightness and wind loading to BS 6375.



BBA Approval

Liniar's whole window system is BBA (British Board of Agrément) Approved, verifying an impartial and unbiased review on the performance of products.



BS EN 12608:2003

Holding the British Standard for quality, consistency and performance required for uPVC extruded hollow profiles, Liniar's systems are tested to ensure continued compliance.



BuildCheck

An independent testing house conforming to British standards and accredited by UKAS and the BFRC. Liniar's ModLok™ bi-fold door was first to pass its Folding/Sliding Door Scheme.



BS EN ISO 9001 (Quality)

Liniar's factory has BS EN ISO 9001:2008 accreditation for quality management systems - proving its strong customer focus and continuous improvement cycle.



BS EN 14001 (Environmental)

Liniar has been certified for the latest BSI (British Standards Institute) ISO 14001 Environmental Management System (EMS), thanks to a continued focus on sustainability.



BS EN 6375

Parts 1, 2 & 3 relate to the requirements of windows and doors, including weather testing inclusive of wind loading, functionality testing and cyclic testing. .



CORGI Fenestration

The most recognised consumer mark in history, Liniar was the first systems company to achieve registration to the scheme - assuring the highest quality products, processes and business practices.

The Liniar range



Casement Window
The most popular choice, casement windows may include top or side opening sashes, arched tops, mock sash horns or astragal bars.



Tilt & Turn Window
Perfect as a fire escape, the 'open in' style offers great options for cleaning from within as well as maximising ventilation.



French Window
With both sashes opening out from the centre, Liniar French windows have a dummy centre mullion, resulting in a fully open aperture.



Flush Sash Window
Offering both a sleek, contemporary appearance or the realism of a traditional timber window – with 21st century thermal benefits.



Reversible Window
Rotating a full 180°, this window style is ideal for high-rise applications and hard to reach areas as it can be safely cleaned from the inside.



Resurgence Window
A new concept in uPVC windows, Resurgence offers a unique timber replica design with double-rebated weatherproof seals.



Bi-fold Window
Popular in conservatories and orangeries, bi-folding windows fold back to one side of the opening for uninterrupted views.



Bay/Bow Window
A great way to bring more light into your home, bay or bow windows can be made from standard or flush sash casements.

The Liniar Window range

Don't compromise between security and energy efficiency – choose Liniar.

The Liniar 70mm window system was created from scratch, building in innovative design features intended to reshape the accepted standards for uPVC windows. Multi-chambered frame technology means Liniar windows can achieve the highest energy ratings of A++ whilst at the same time attaining Secured by Design status. Standard 4-chamber, EnergyPlus 6-chamber and EnergyPlus90 9-chamber frames all deliver supreme thermal efficiency.

Liniar window styles are available in a choice of sculptured (curved) or chamfered (bevelled) frames and can be manufactured with either 28mm double or 36mm triple glazing. A huge range of colours and finishes means you can personalise your windows to your own requirements.

Why choose Liniar windows?

- Designed from scratch to achieve the pinnacle of thermal performance.
- Engineered with built-in security features and fully tested.
- Backed with quality assurance and accreditation for peace of mind.
- 100% lead-free, fully recyclable and fully guaranteed.



Casement Windows

Still the most popular choice for homes all over the UK, Liniar casement windows offer total versatility and either classic or contemporary style.

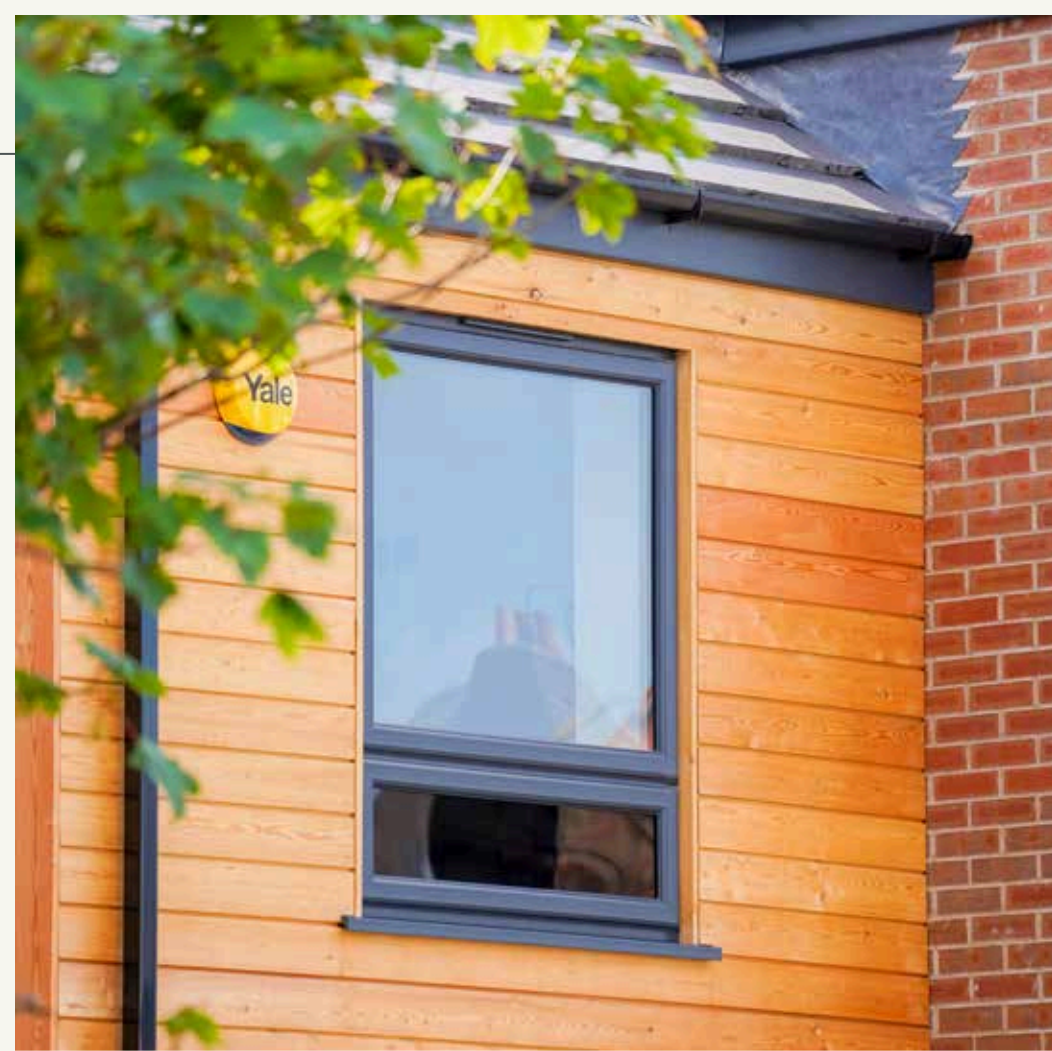
This traditional British window style offers slim sight lines to let in maximum light. It's available in a wide choice of configurations, including top or side hung windows, so you can personalise each window to your requirements.

Adding moulded sash horns gives Liniar casement windows the appearance of traditional vertical sliders – or for additional character you can add astragal or Georgian bars to your windows.

You could also add arched tops, coloured or bevelled glass, and there's a wide range of colours and finishes to choose from. With matching cills and either traditional or contemporary handles, the choices are almost endless. Liniar's patented bubble gasket is used in all products and delivers a continuous seal – even in the corners – resulting in draught-free, weather proof and leak-free windows, all with high security features.

Options at a glance:

- Choose from standard, EnergyPlus or EnergyPlus90 frames
- Sculptured (curved) or chamfered (bevelled)
- Add Georgian bars and/or patterned glass
- Wide choice of coloured and foiled frames
- Wide choice of handle and hinge options.





Flush sash windows

Sleek, flush and thermally efficient – Liniar’s original flush sash range delivers a window with the realism of a traditional timber window.

For many property owners, uPVC windows aren’t an option due to planning or environmental restrictions. The Liniar flush sash range changes the rules, delivering realistic traditional-looking windows combined with 21st Century thermal benefits. As the name suggests, the sash fits flush into the frame on all external faces of the window, giving it a distinctive, sleek appearance that’s also ideal for more contemporary properties.

With the inside of the sash beautifully sculptured, woodgrain effect foils can be factory fitted for an authentic timber façade, or you can choose flat foils for a modern effect. You could even try different colours on the sash and outer frame for a totally personalised look. The flush sash delivers A+ energy ratings and U-values as low as 1.2 W/m²K. Many delighted property owners have won over planning restrictions where uPVC had formerly seemed impossible, thanks to the Liniar flush sash.



Options at a glance:

- EnergyPlus 6-chamber outer frame & 4-chamber sash
- Sculptured (curved) edges
- Add Georgian bars and/or patterned glass
- Wide choice of coloured and foiled frames
- Wide choice of handle and hinge options.

Resurgence windows



A stunning 'timber alternative window', Resurgence takes the flush sash style to new levels of design, elegance and thermal efficiency.

The UK's first uPVC double-rebated flush sash window, Resurgence, offers the ideal solution for both modern and character properties.

Resurgence offers unrivalled energy efficiency with a Window Energy Rating (WER) of A++. Liniar's double-rebated, co-extruded seal delivers a weather and draught-proof installation without the tell-tale brush piles often seen in the shadow gap of other uPVC flush sash windows. All Resurgence seals are conveniently out of sight for a clean, beautifully sleek finish.

When Resurgence is installed with a woodgrain foiled finish, it's difficult to distinguish from a traditional timber window. Thanks to a comprehensive lamination process, Resurgence is foiled on interior surfaces too, providing a realistic finish even when the window is open.

Personalisation and Resurgence

Resurgence is available in a stunning range of colours, including woodgrain foils such as the popular Anthracite or Agate Grey, Anteak Oak and Sheffield Oak. It can also be fitted with either double or triple glazing for different thermal and acoustic options. For all available options, including hardware and security solutions, contact your fabricator or installer.

Resurgence, Article 4 and Conservation

Resurgence replicates the timber windows found on historical properties with the added 21st century benefits of low maintenance and high thermal efficiency. If you live in a historical, grade listed or conservation property, you will be subject to Article 4 or Listed Building Consent in order to fit Resurgence windows in your property.

While some councils are taking a more modern approach and accepting timber replica, energy efficient uPVC windows, it is best to check with your local council and Local Planning Authority before beginning any work on your property.





Tilt & turn windows

If you love opening your windows wide to let in fresh air, but worry about security, why not consider the European style of a Liniar tilt and turn window?

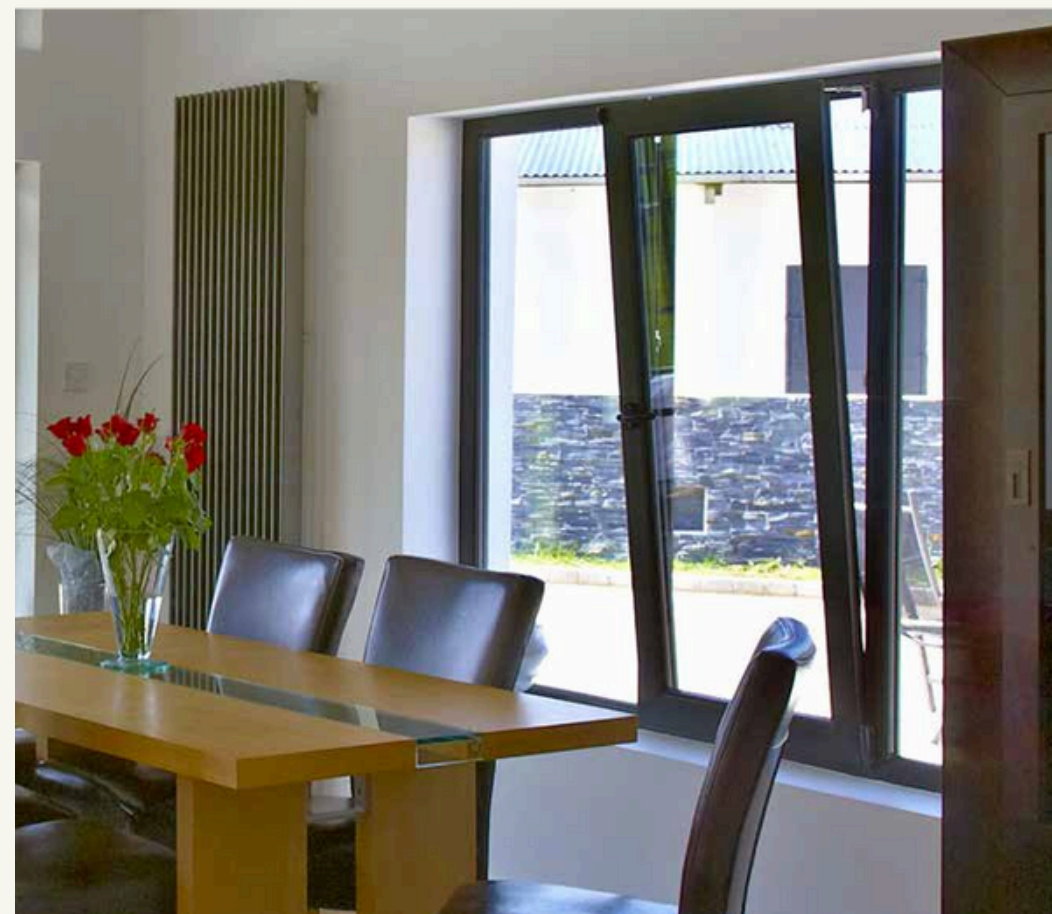
The 'open in' style gives great options for cleaning from within (in the turn position) and secure ventilation (in the tilt position).

Offering a greater scope for larger openings than a traditional casement window, Liniar's tilt & turn windows are ideal for high-rise as well as low-rise applications, and thermal performance is helped by the larger panes of glass. Astragal or Georgian bars can be added, and your installer will be able to show you the wide choice of coloured and patterned glass on offer to you.

As with casement windows, Liniar's patented bubble gasket delivers a continuous seal around the edges, resulting in draught-free, weather proof and leak-free windows with U-values as low as 0.9 W/m²K.

Options at a glance:

- Choose from standard 4-chamber or EnergyPlus 6-chamber frame.
- Sculptured (curved) or chamfered (bevelled)
- Add Georgian bars and/or patterned glass
- Wide choice of coloured and foiled frames





Reversible windows

Designed to make life easier...

The innovative Reversible window from Linar makes cleaning the exterior of your windows effortless and safe. This window boasts a moveable pane which rotates a full 180° cycle, allowing the external glass of the window to be reached safely from inside the property.

The innovative, easy to operate window pane is designed not to intrude inside. With a unique rotating mechanism, you can rest assured that the pane won't snag on blinds, curtains or furniture. Utilising Linar's patented features, the Reversible window is weatherproof and draught free, and with an easy-fit one-piece drip bar it easily withstands even the worst UK weather conditions with the utmost thermal efficiency.

Ideal for any type of property, particularly high-rise accommodation or upper floors with hard-to-reach windows, such as above a conservatory, the Reversible window matches the rest of the Linar range.

Designed from scratch by a team with more than 500 years' experience in the windows industry, the Reversible window offers a flush finish on both the interior and exterior of the window and features some of the slimmest sightlines available. Contemporary with stunning chamfered lines, choose from a wide range of solid and woodgrain foils to suit your property.

Fully guaranteed with exceptional customer service, the Reversible window is the ideal choice for both residential and commercial properties.



French windows

Similar to the styling of French doors, Liniar's French windows open out from the centre to offer a full-width opening and maximum light.

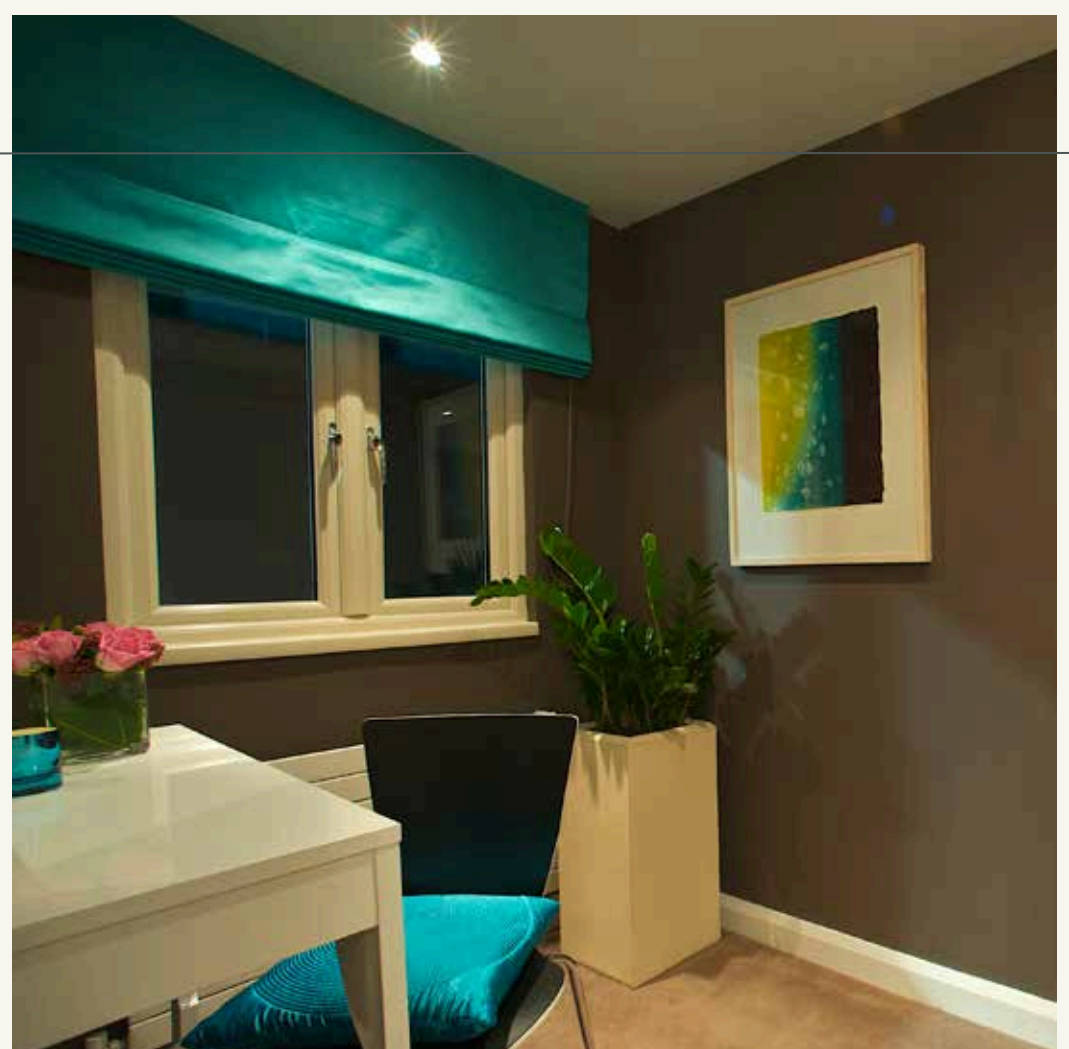
Offering a distinctive style, French windows are ideal as a fire escape. One sash carries with it the central mullion as the windows are fully opened, providing you with unrestricted access and views.

With high security locks, your security is assured – and child restrictors can also be added for peace of mind. Traditional or contemporary, French windows can be installed in a variety of locations and buildings.

Liniar French windows feature the patented bubble gasket used in all products, delivering a continuous seal, even in the corners. This results in draught-free, weather proof and leak-free windows. High energy ratings result in U-values as low as 0.8 W/m²K.

Options at a glance:

- Choose from standard 4-chamber or EnergyPlus 6-chamber frame
- Sculptured (curved) or chamfered (bevelled)
- Add Georgian bars and/or patterned glass
- Wide choice of coloured and foiled frames
- Wide choice of handle and hinge options.



Bay or bow windows

Liniair's innovative bow and bay window styles offer a number of features and benefits unrivalled in today's marketplace and are available in a range of options.

A great way to bring more light into your home, a bow or bay window style utilises either a standard casement or flush sash window to form a collection of windows set together at an angle.

By choosing different styles, colours, glazing designs and handles, your bay or bow windows can be truly personalised for your home.

Liniair's innovative design of the interior and exterior joint couplings prevents dust traps forming, making cleaning with a damp cloth quick and easy.

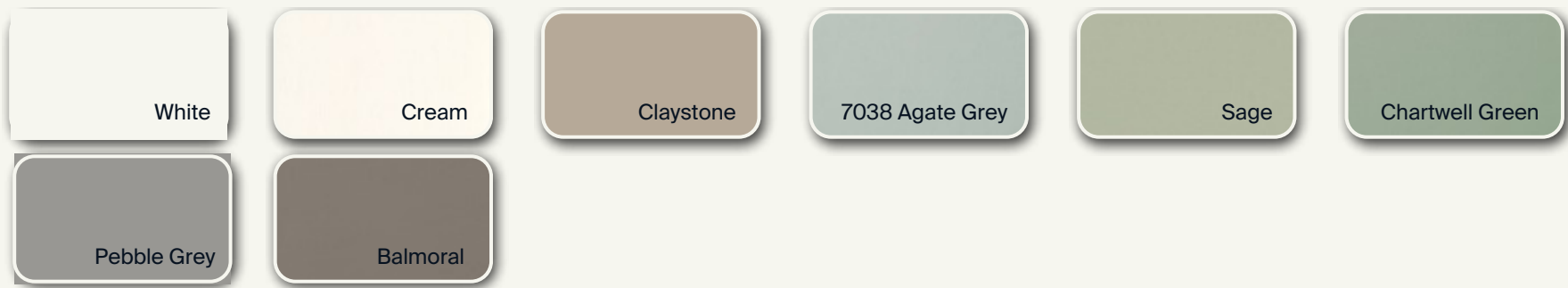
Options at a glance:

- Standard 4-chamber or EnergyPlus 6-chamber frames
- Sculptured (curved) or chamfered (bevelled)
- 28mm double glazed or 36mm triple glazed units
- Flush Sash styling available (see page 20)
- Add Georgian bars and or/patterned glass
- Wide choice of coloured and foiled frames
- Wide choice of handles and hinge options

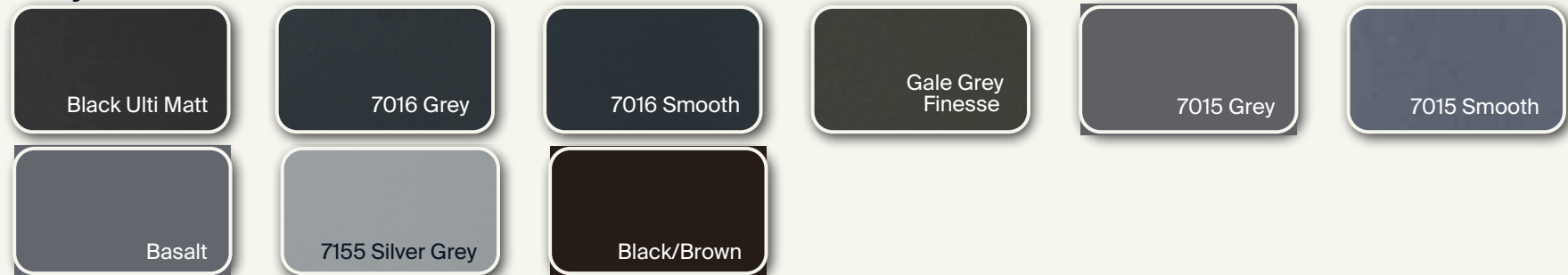


Liniar's colour range

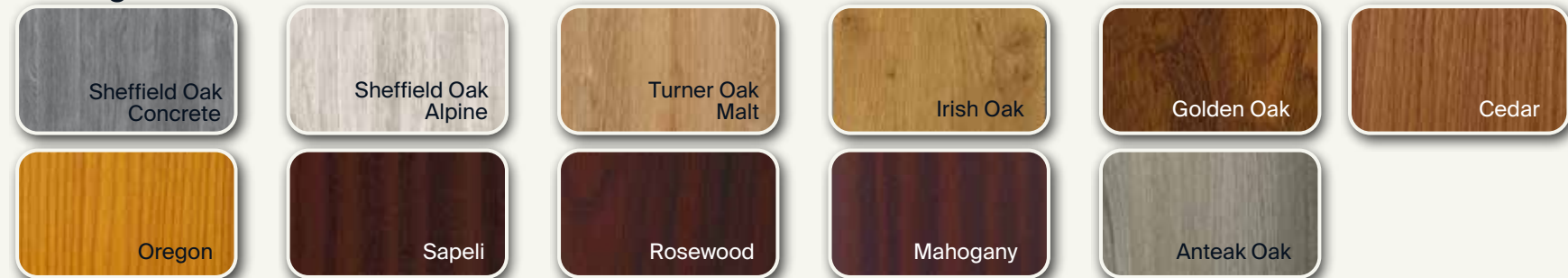
Neutrals



Greys



Woodgrains



Metallics



Primary



More options to consider



Georgian Bars

Unlike other astragal bars, Liniar Georgian bars are designed to simply snap into place before glazing and won't fall off. They also offer a more authentic appearance than adding aluminium bars within the sealed unit.



Thresholds

All Liniar doors are supplied as standard with uPVC outer frame and optional cill. You can also select a standard aluminium low threshold or a Part M compliant full or half aluminium threshold.



Arches

Liniar uPVC profile can be shaped to give your installation a truly bespoke appearance. Offered by a limited number of specialists, arching can add modern or contemporary styling.



Patterned Glass

A huge range of etched and patterned glass is available in both double and triple glazing for your Liniar windows, doors and sidelights. Ask your installer for the options they can offer.

Fire exits

It's important for every homeowner to plan an exit route in the unlikely event of a house fire. Liniar French and Tilt & Turn windows are ideal to provide a practical solution for your family's safety.

Child safety

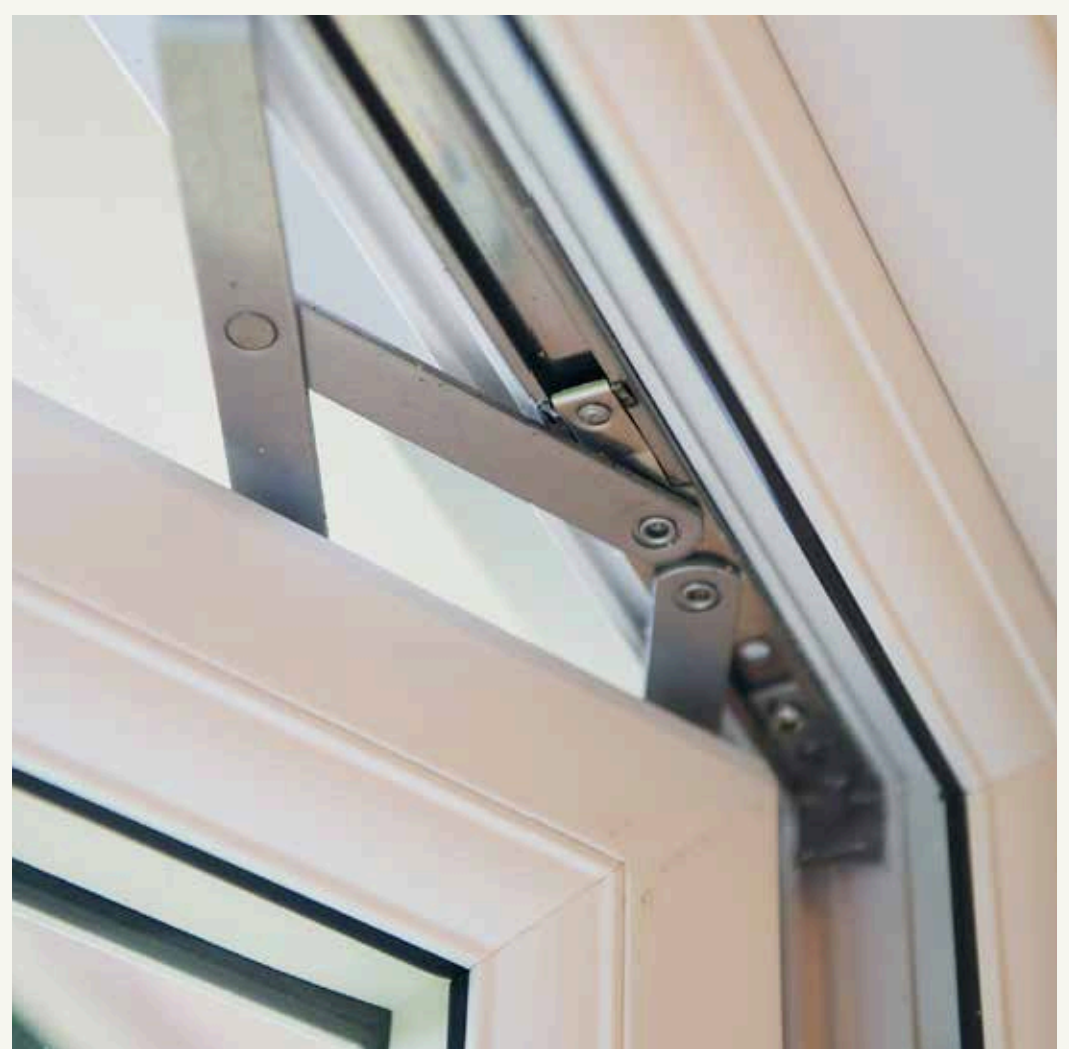
If your windows are intended to open fully, you may wish to fit child restrictors for additional safety for your family. Child restrictors can be fitted to almost any Liniar window.

Hinge guards

Optional hinge guards add a further level of security to your Liniar windows and help to prevent the moving sash from being forcibly opened from the outside.

Handles

Locking handles should be fitted for maximum security – and the choice of colours, styles and designs is almost endless. Ask your installer to show you the full range offered.



Finished window and door products are manufactured by independent Liniar fabricators, who can offer a wide range of finishes including glass, handles and hardware. Please see your local fabricator for more details about specific requirements.

The finishing touch

Complete your window installation with perfectly matching roofline products, by choosing Liniar's high quality fascias, soffits and trims.

Thicker and stronger

Manufactured in-house by Liniar, all fascia boards are made using the latest advancements in extrusion equipment and technology, ensuring the highest quality.

At 20mm thick, instead of the customary 16mm, Liniar's fascia boards provide greater strength than other boards. Longer return legs and extra cover on mouldings help the installer to fit them more quickly. And pricing is competitive, with the thicker 20mm boards being similar to 16mm prices elsewhere.

Fully matching

Liniar's boards and trims are available from stock in the same choice of foiled colours as the Liniar sculptured window suite, with special colours and finishes also being available with a longer lead time.

Mouldings will be foiled to match for a perfect finish to installations.

A single guarantee

As the range is covered by Liniar's 10-year guarantee against discolouration, warping or splitting, it makes sense to order all Liniar products for a single point of contact.





WWW.VALUEDOORS.CO.UK | PHONE 020 4587 8300

